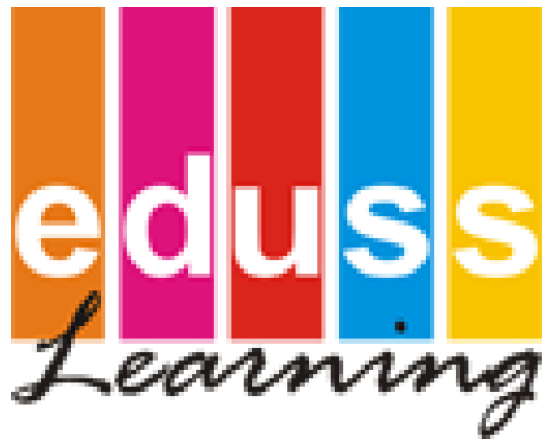


# Installation Instructions

French A Module Install



EdussTM Limited – ABN 37 095 551 161

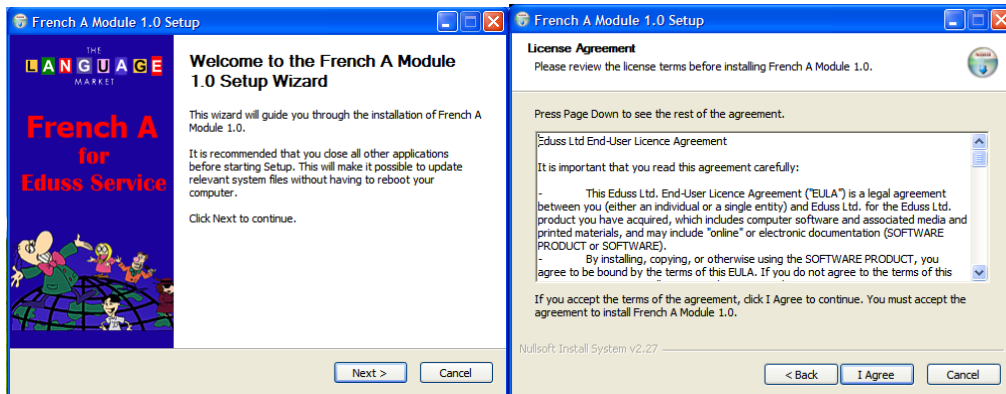
Postal Address: Unit 1, 2-6 Breakwater rd, Robina, Queensland, Australia  
Ph: +61 (0) 7 5569 0099 Fax: +61 (0) 7 5569 2877 e-mail: [info@eduss.com](mailto:info@eduss.com)

**Please Note: Eduss Service Must Be Installed Before The Modules.**

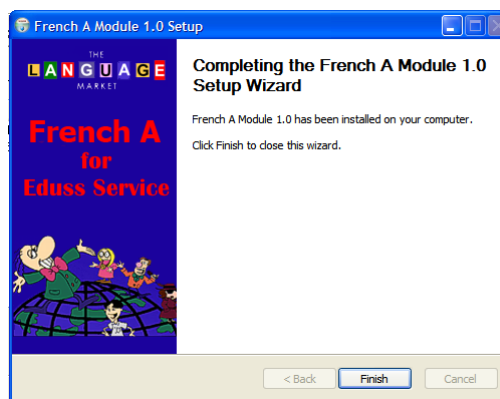
**Module Install For Server**

To install the modules insert the Eduss CD into the CD-ROM drive and navigate to it by going to **My Computer** and right clicking on the CD-ROM drive and selecting **Open** from the menu.

1. Once inside the CD menu double click **FrenchAModule.exe**. The install window will open and you will need to click on **Next**.
2. The next window will show the licence agreement, which you will need to read carefully and agree to. If you do agree click **I Agree**.



3. The program will now be installed, once it's done you will have to click **Finish** to close the installer.



**Updates**

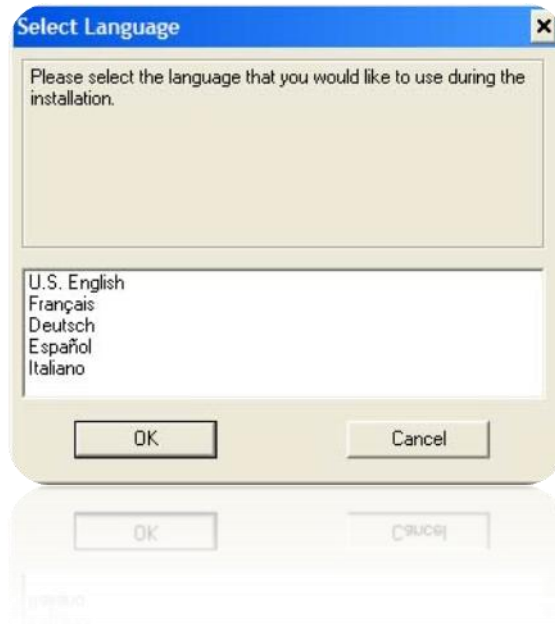
**IMPORTANT:** After you have completed the module installation, it is advised that you check the EDUSS website for any updates available for the language program and download them. To find the updates:

1. Go to **http://www.eduss.com.au**
2. Click on **Product Support**
3. Use the **Product Support** menu to navigate to the product updates page for your language program. This page will have full instructions on how to check the version you currently have, and whether there are any updates for that version or not.

## Workstation Installs

### Adobe Flash Player Installation

1. To install Adobe's Flash Player Navigate to the Eduss CD by opening **My Computer** and then right clicking on the Eduss CD and selecting **Open** from the menu.
2. Double click on **install\_flash\_player.exe**
3. You will see a window which asks you to choose your language. Select the appropriate one and click **OK**.



### Setting Up Workstation Links

You will need to create a shortcut on each workstation desktop. You can do this one of two ways.

1. You can use this address:  
**http://YOURSERVERNAME:9957/TLM/page/index.php**, where **YOURSERVERNAME** is the name of the server that the Eduss software is installed on. To create the shortcut, simply right click on the Desktop and select **New > Shortcut**. Inside the text box past the address then click **Next**. Name the Shortcut according to the module it is linked to then click **Finish**.
2. Or, you can create a link to **TLM\_NET.exe** on your server. Do this by firstly sharing the **bin** folder in **C:\Local Disk > Program Files > Eduss > Service** on your server. Then you right click the Desktop and select **New > Shortcut**. Browse to **TLM\_NET.exe** which should be on the server in the folder **Eduss > Service > bin**.